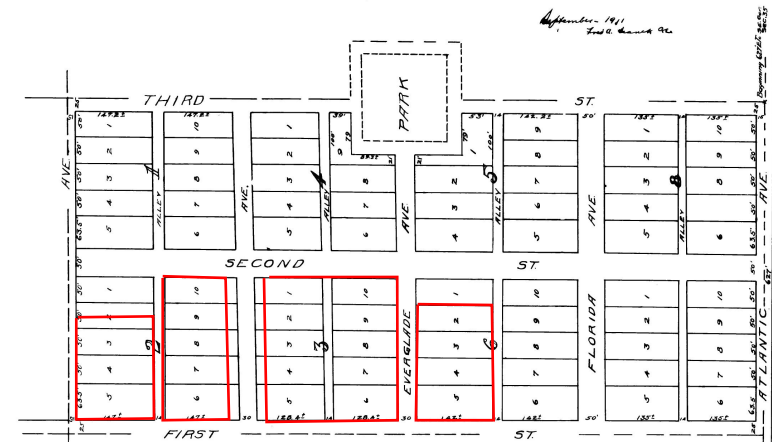


PLAT  
OF  
CAMPBELL AND SAXON ADDITION  
POMPANO, FLA.

Described as follows: Beginning at a point 627' W. of SE. cor. Sec. 35-48-42,  
N. 135° W. 627' S. 1520', E. 627' 75' 00" S. 1520',  
Block Numbers will not conform with general enumeration of town plat  
Scale 1/8" = 1' = 100'

September 1911  
Filed for Record 9th



STATE OF FLORIDA  
COUNTY OF PALM BEACH } ss  
This instrument was filed for record this 6th  
day of September, 1911, and duly  
recorded in the 6th day of September  
1911, in Book 125 of Public Records  
and page 125, RECORD VERIFIED  
By *Robert B. Henderson*  
County Clerk  
By *John E. Porello*  
Deputy Clerk

125  
Copied by  
BOWELL & HOLSTLAW  
UNDER SUPERVISION OF  
CHARLES  
COUNTY ENGINEER  
Passed by CHM Checked by JRM